



**INSPECTION POINT SEALS, LLC**

Manufacturer of the patented IPS Inspection Port, the cost effective way to access piping and vessels when performing CUI inspections.

**Features and Benefits:**

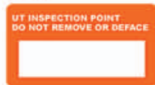
- Watertight Seal without Screws, O-Rings or Caulk
- Installs Easily without Special Tools
- Reduces Installation Time

**UTL2**



UT INSPECTION POINT  
DO NOT REMOVE OR DEFACE

**UTL3**

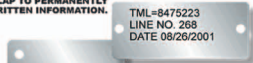


UT INSPECTION POINT  
DO NOT REMOVE OR DEFACE

**UTL1**



UT INSPECTION POINT  
DO NOT REMOVE OR DEFACE



TML-8475223  
LINE NO. 268  
DATE 08/26/2001



**MODEL 210**  
For 6mm+ Pyrogel<sup>®</sup> Aerogel  
Insulation

**SILICONE**

**-130°F**    **+500°F**  
**+1000°F\***

\* Maximum temperature is achieved with our ThermoDisc Insulation properly installed.

**MODEL 206**  
For cal-sil, foam glass  
or perlite insulation.  
Also PVC jacket.

**MODEL 95**  
U. S. Patent #6082576

**1-888-236-0408**  
39421 Highway 929, Prairieville, LA 70769  
Ph. (225) 622-6183  
Fax. (225) 622-6787

[www.ipseals.com](http://www.ipseals.com)

*" Please see our website for complete product listings and specifications "*